

4.1 Review - Warm-up

$$y = a(x-h)^2 + k$$

1. What are the vertex, the axis of symmetry, the minimum or the maximum, the domain, and the range of $y = -4(x+3)^2 - 7$?

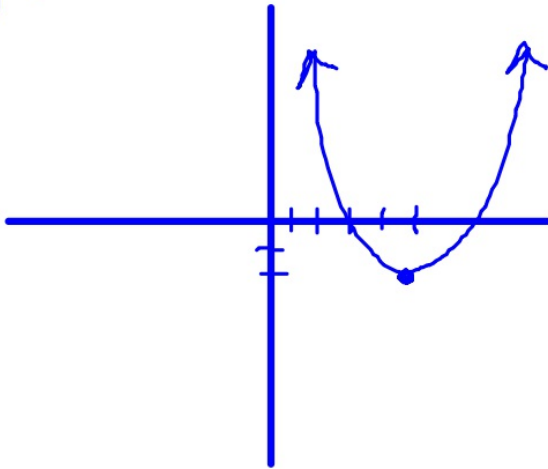
vertex = $(-3, -7)$

Axis of symmetry = $x = -3$

Max / Min ??

2. What is the graph of $f(x) = \frac{1}{2}(x-5)^2 - 2$?

$(5, -2)$



Domain: \mathbb{R}

Range: $\mathbb{R} \leq -7$

